

Lithium Iron Phosphate(LiFePO4) Battery

ALFP-48100(51.2V 100Ah)



Features Of LiFePO4 Battery

Longer Cycle Life: Offers up to 10 times longer cycle life and five times longer float/calendar life than lead acid battery, helping to minimize replacement cost and reduce total cost of ownership.

Lighter Weight: About 40% of the weight of a comparable lead acid battery. A 'drop in' replacement for lead acid batteries.

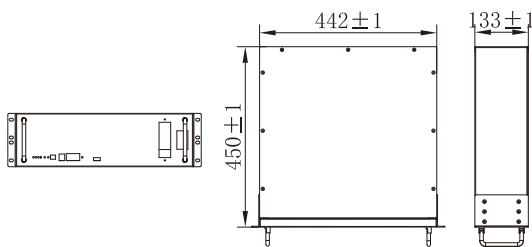
Higher Power: Delivers twice power of lead acid battery, even high discharge rate, while maintaining high energy capacity.

Wider Temperature Range: -20~60°C

Superior Safety: Lithium Iron Phosphate chemistry eliminates the risk of explosion or combustion due to high impact, overcharging or short circuit situation.



Physical Dimension-mm



Application

- Indoor/outdoor telecom base stations E
- UPS
- Household energy storage system

Specification

Electrical Characteristics	Nominal Voltage	51.2V
	Nominal Capacity	100Ah
	Nominal Energy	5120Wh
	Combination Method	16S1P
	Cycle Life	≥6000 cycles @80%DOD
	Months Self Discharge	@25°C3%/Month
	Efficiency of Charge	≥97%
	Efficiency of Discharge	≥98%
Standard Charge	Recommended Charging Voltage	56.8V
	Recommended Charging Current	20A
	Max. Charging Voltage	57.6V
	Max. Charging Current	100A
Standard Discharge	Recommended Discharging Current	50A
	Max. Pulse Current	100A
	Discharge Cut-off Voltage	43.2V
Environmental	Charge Temperature	0°C~45°C
	Discharge Temperature	-20°C~60°C
	Storage Temperature	0°C~40°C
Other	IP Class	IP30
	Plastic Case	Metal
	Dimensions (in. /mm.)	442*450*133mm
	Weight (lbs. /kg.)	45kg
	Others (optional)	Anti-theft function, LCD display